

DESCRIPTION

Solenoid valve 2 way normally closed
direct acting poppet type

CONSTRUCTION

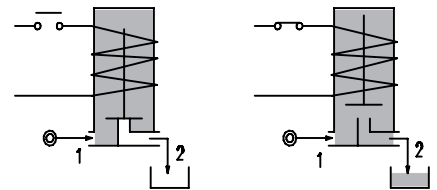
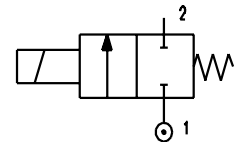
Body	Brass
Armature tube	Stainless steel
Plunger and core	Stainless steel
Springs	Stainless steel
Seal material	NBR FPM EPDM PTFE



2

FEATURES

Maximum allowable pressure 50bar*
 Maximum fluid viscosity 25cSt (mm²/s)
 Ambient temperature: with class F coil -10°C +55°C
 with class H coil -10°C +80°C
 Universal mounting position



OPTIONS: Manual override
 Electroless nickel plating
 Stainless steel seat insert
 Version for use with oxygen

CODE ① ②	Flange	Orifice mm	Kv m ³ /h	Differential pressure bar			Nominal power			Coil		Seal ①	Temp. range °C
				Min	Max		AC Inrush	VA Holding	DC Watt	Series	Width		
					AC	DC							
E114X...15///...	Q32	1.5	0.07	0	30	26	20	15	10	2	30	NBR=B	-10 +90
E114X...20///...		2	0.1	0	22	20							
E114X...25///...		2.5	0.15	0	16	14							
E114X...35///...		3.5	0.32	0	10	8							
E114X...45///...		4.5	0.41	0	6.5	3.5							
E114X...25///...	Q32	2.5	0.15	0	35	33	40	30	27	5	36	FPM=V	-10 +130
E114X...35///...		3.5	0.32	0	20	19							
E114X...45///...		4.5	0.41	0	14	13							
												PTFE=W ③	-10 +180

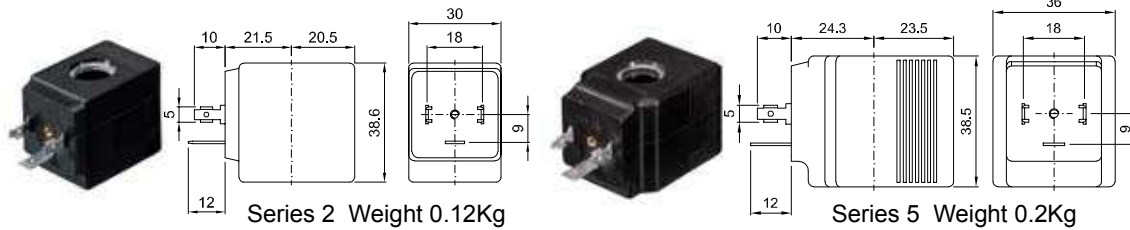
① Seal Example: E114XB25///20E NBR seal
 ② Coil Coil 230V 50/60Hz

* REMARK: The maximum allowable pressure PS for steam is 6bar with PTFE seals and 2,5bar with EPDM seals

COILS	Alternating Current 50/60Hz Volt							Direct Current Volt			Electrical connection	Connectors
	12	24	48	110	220 230	240	380	12	24	48		
Series 2 Width 30 Code ②	20A	20B	20C	20D	20E	20F	20G	200	201	202	DIN 43650A	PG9 code 10349000
Series 5 Width 36 Code ②	52A	52B	52C	52D	52E	52F	52G	520	521	522	DIN 43650A	PG11 code 10349001

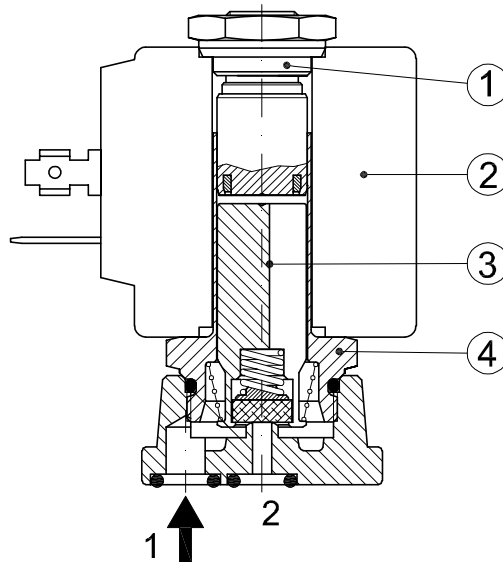
DESCRIPTION
 Insulation class
 Series 2 =F Series 5=H
 Voltage tolerance
 AC +15% -10%
 DC ± 10%
 Protection class
 IP65 with connector fitted
 IP00 without connector
 Continuous service ED100%

OPTIONS
 Class H insulation (series 2)
 Cable attached
 Special coil voltage
 Special coil powers

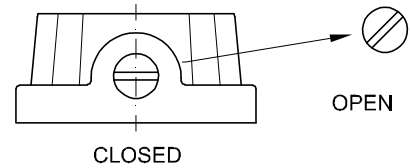


SPARE PARTS LIST

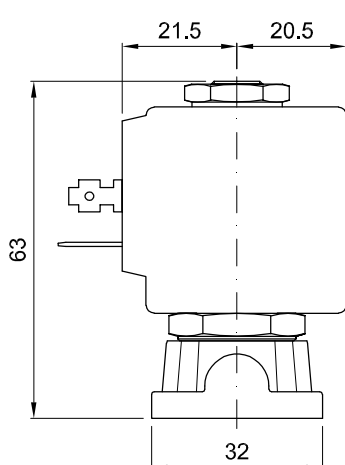
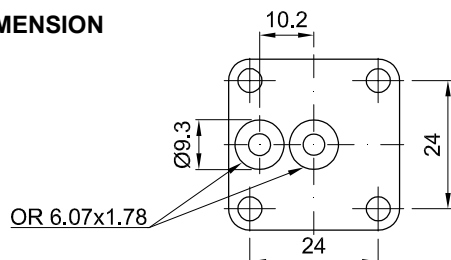
1. Coil fixing nut
2. Coil
3. Plunger
4. Armature tube with core



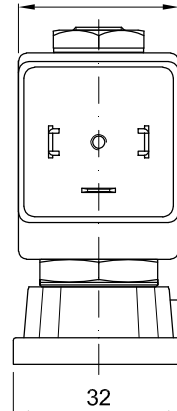
MANUAL OVERRIDE



OVERALL DIMENSION



30 with coil series 2
 36 with coil series 5



Weight with coil series 2=0.24Kg
 Weight with coil series 5=0.32Kg